



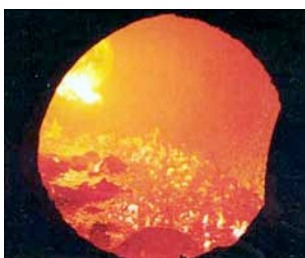
106 Tejas Dr - Terrell, Texas, USA - (800) 637 - 6161 - www.ecsrefining.com

World Class Service and Dedication to the Environment

About Us

ECS Refining was founded in 1980 as an electronic scrap and solder dross recycling facility servicing primarily the Silicon Valley. From a lone facility in Santa Clara, California, ECS has established a reputation of environmental leadership in the refining of secondary metals by offering unique capabilities to develop environmentally responsible recycling options for businesses.

In the fall of 1996 ECS began operating a second facility in Terrell, Texas, a city located 30 miles east of Dallas, Texas. Originally constructed in 1991 on land that had been agricultural, this plant is the cleanest, most modern facility of its type in the United States. It houses one of the largest rotary furnaces in North America.



What We Do

ECS Refining Texas takes your metal waste and byproducts and, using our knowledge and technologies, produce metal alloys for use by the customers we sell our products to. Once a shipment has arrived at our facility in Terrell, Texas, we will analyze the materials received and refine it to a usable metals product. We produce a certificate of recycling as well as an assessment of the materials received to ensure that you are in compliance with Federal and local environmental regulations.

Materials We Recycle

- Tin/Lead Dross
- Lead Free Dross
- Silver-bearing Filter Cakes
- Solder Pastes and Creams
- Tin Rinses
- Solder Pots and Pot Metals
- Bar and Wire Solder
- Metals Contaminated Trash such as :
 - Wipes
 - Under-stencil Rolls
 - Gloves and Finger Cots
 - Rags
 - Paste Cartridges and Jars
- Bag House Dusts
- Other Wastes with a significant and recyclable amounts of Tin, Lead, Antimony, Silver and/or Gold



The ECS Difference

ECS Refining Texas pays settlements based on the net metals weight of the shipment, not the “Recovered Material” as our competitors do. What this means to our customers is that if we receive 1000 pounds of dross, we’re paying for the entire shipment, not just the ‘recovered material’. In effect, ‘on paper’ our competitors may appear to offer a higher price, but are likely only actually paying for 70 to 75 percent of the ‘recovered’ tin weight of the materials shipped and only paying for tin rather than all the metals available.

ECS doesn’t use complex or misleading formulas on our estimates, nor do we expect the customer to be an expert in metals refining and metal markets. Instead, we provide an up-front estimate based upon the customer’s estimated metals content. Upon receipt of our customers’ material we use our state-of-the-art laboratory to determine the elemental makeup of your material to pay our settlements with the most accurate methods available today. When we issue a settlement, we also provide a ‘Certificate of Recycling’ to our customers to allow for an accurate cradle-to-grave accounting of their hazardous wastes. All of these factors are what make ECS Refining Texas a leader in service, commitment to the environment, and your best choice for your recycling needs.

To further serve our customers, we have an ‘open door’ policy and welcome all our customers to come visit us at our facility in Terrell, Texas to learn about us, our processes, our equipment, and most importantly, our staff.

We make the recycling process simple and understandable with a focus on service and transparency so that we can live up to our pledge, “**ECS: Every Customer Satisfied**”.